

SlimFlex 5

ALL NEW !!

The most innovative and flexible water treatment controller available!



Introducing flexible programming with ProMinent's **SlimFlex 5** Built-in WiFi Hotspot. Enhanced, responsive browser views for smart phones and tablets makes programming fast and easy! Built-in Ethernet and integral data logger creates the total communications package for all of your cooling tower and boiler applications.

Features:

- Cooling Tower or Boiler
- 5 Flexible control outputs include: ON/OFF setpoint or time based control
- Built In Wireless Access Points, Ethernet and USB
- New Keypad design for easy menu navigation
- Enhanced responsive browser views for Smart Phones and Tablets
- pH and/or ORP along with conductivity
- 6 digital inputs for multiple flow meters or status indicators
- 6 Status LED's
- 5 Powered relays (2 are powered - 3 are dry contacts and can be powered)
- Integral Data Logger
- Conductivity, pH, ORP and Fluorometer
- Email out data and alarms

Benefits:

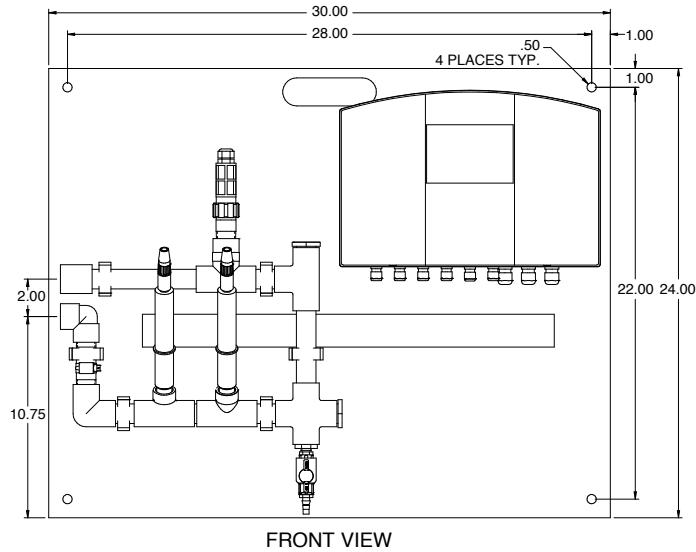
- 1-3 Days Shipping
- One on One Direct Sales and Technical Support (phone / chat / eMail)
- ProMinent cultivates culture of unparalleled Service and Support
- No Expedite Fees
- Standardization of Custom Packages Engineered for your Customers



ProMinent®

SlimFlex 5

Example Engineered Package



Specifications

Specifications		
	Rating - Detail	Notes
Analog-Digital I/O		
Conductivity Serial Sensor	Tower & Integral Flowswitch sensors	Default tower sensor includes 1 GPM integral flowswitch & temperature
Conductivity Sensor	Boiler & Condensate sensors	Standard sensor
4-20 mA Current	DC isolated, Manual & Auto modes, Interlocking, Alarm	Each optional current output uses a dual sensor card slot
Manual-Inventory-Inputs	Track drop counts, inventory, tank level, ppm	Alarmed delay prevents premature system ppm alarms
Communications User Interface		
Keypad - OLED	9 Key tactile feedback, 3 Function keys, 4 line Backlit	
10/100 Mbps, TCP/IP Ethernet, WiFi	HTML micro web server with user definable IP address	Static IP Browser shows controller in real time
Controls for ON/OFF & Variable Frequency		
Sequential Volume Setpoints	Feed a fixed volume for every make-up volume	Meter only, fault tolerant feed controls
Blocking	Any of 5 controls may block any other control	Prevents incompatible concurrent controls
Interlocking	Up to 4 contact sets can be 'AND'ed or 'OR'ed	Relays control OFF when contact set opens
Biocide Event Controls	Each of 5 controls includes 28 timed events	Each control selectable for 1, 7 & 28 day cycles
System		
Electrical	100-240 VAC, 50/60 Hz, Single Phase	Universal power supply
Fusing for 2 AC powered loads	6.3 Amps @ 250VAC	Alarm on open AC load fuse
Surge Suppression	5 snubbed contacts	RC / Varistor on AC line input
Enclosure	Non-metallic, IP 65 / NEMA 4X	13.46" x 8.94" x 3.07" (342 x 227 x 78 mm) (WxHxD)



ProMinent Fluid Controls, Inc.
 136 Industry Drive • Pittsburgh, PA 15275 USA
 (412) 787-2484 • Fax: (412) 787-0704
 email: sales@prominent.us • www.prominent.us

© 2018 ProMinent Fluid Controls, Inc.
 All Rights Reserved.

PN: 7750308
 SlimFlex5.indd rev.1 09/05/2018